



## **Private School Enrollment Report**

**2017-2018**

Student enrollment for the Hawai'i's Private Schools: 2017-2018 School Year

## Overview – Statewide

For 2017-2018, Hawai'i's private schools are reporting a total enrollment of 36,259 students in grades PS-12, down 465 (-1.27%) from last year's total of 36,724.

## Overview – Oahu

- Honolulu district reported 20,162, down 293 students (-1.43%) from last year's total of 20,455.
- Central district reported 2,465, down 169 students (-6.42%) from last year's total of 2,634.
- Leeward district reported 2,299, down 58 students (-2.46%) from last year's total of 2,357.
- Windward district reported 2,651 down 3 students (-.11%) from last year's total of 2,654.

## Overview – Neighbor Islands

- Hawai'i reported 3,567 students, down 13 students (-0.36%) from last year's total of 3,580.
- Maui reported 3,737 students, up 69 students (2.36%) from last year's total of 3,668.
- Kauai reported 933 students, down 10 students (-1.06%) from last year's total of 943.
- Molokai reported 45 students, equal to last year's total of 45.
- **Overall**, neighbor island schools reported enrollment of 8,282, up 46 students (.56%) from last year's total of 8,236.

## Overview – Special Purpose Schools

Three "special purpose" schools reported enrollment of 400 students, up 12 students (3.09%) from last year's total of 388 students. (Assets School, Variety School, Horizons Academy)

## Data on the Hawai'i's Private Schools – By Island

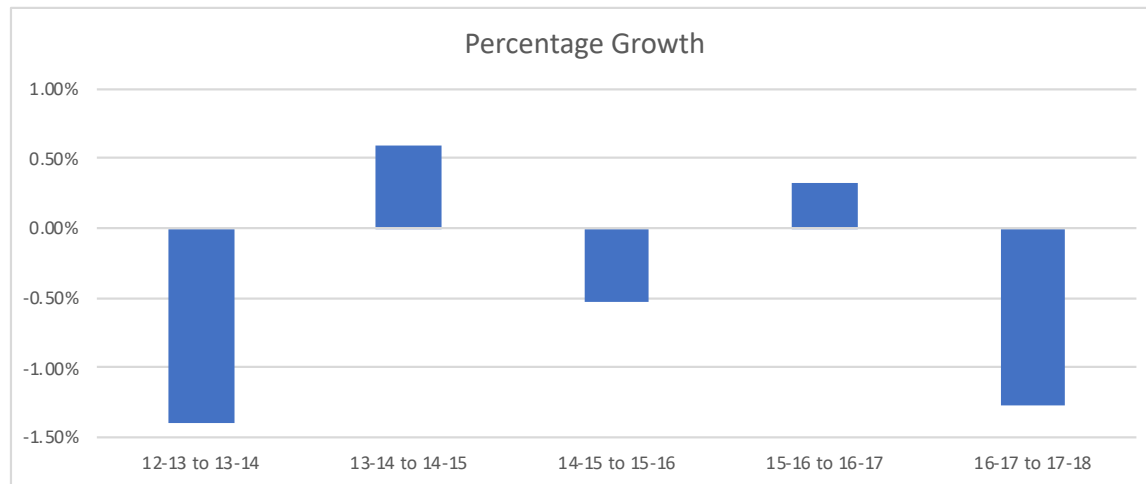
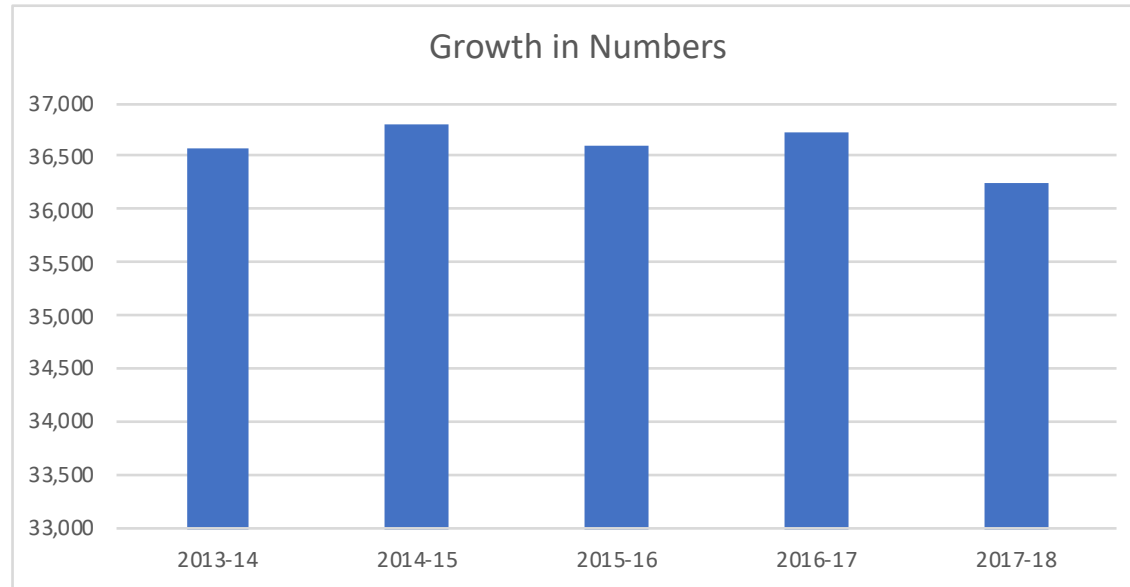
Oahu:	67 schools	Includes 2 special purpose schools
Hawai'i:	13 schools	
Maui:	15 schools	Includes 1 special purpose schools
Kauai:	4 schools	
Molokai:	2 schools	
<b>TOTAL:</b>	<b>101 schools</b>	

## Analysis of Increases and Decreases in Enrollment

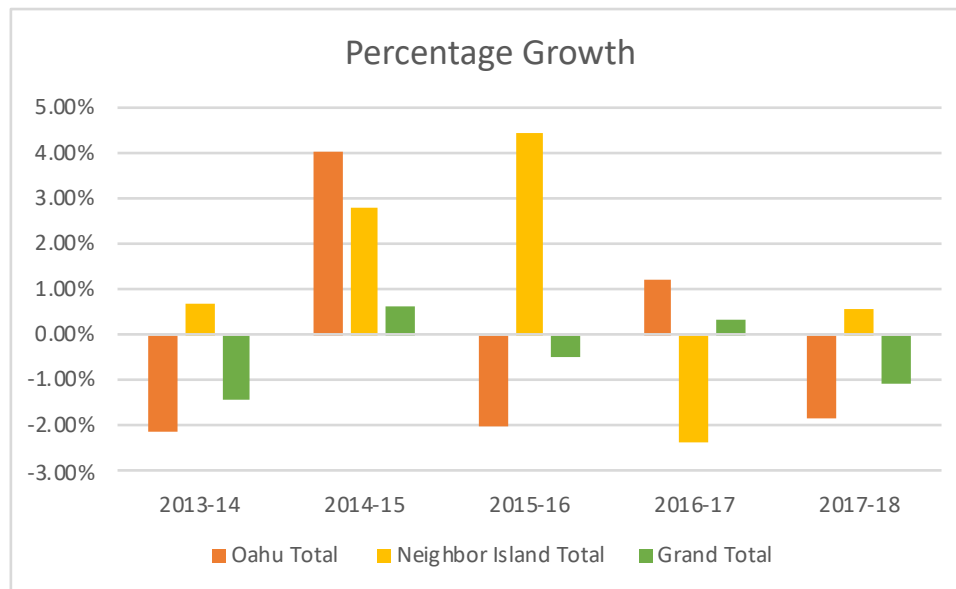
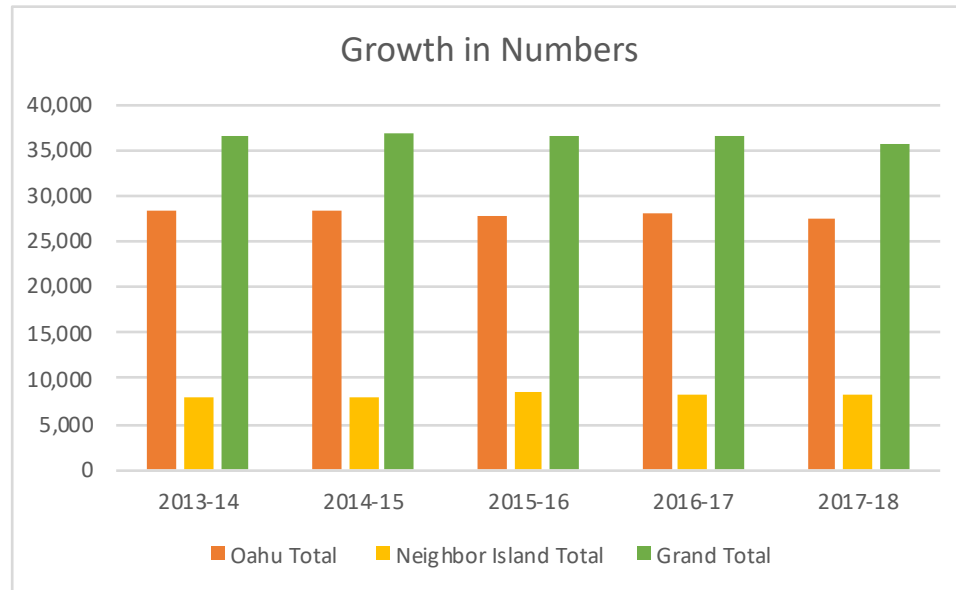
- Oahu: 33 schools reported enrollment the same or increasing. 40 schools reported enrollment decreasing.  
Of Oahu Schools with decreasing enrollments:
  - 17 had decreases less than 5%
  - 10 had decreases of 5.1% - 10%
  - 9 had decreases of 10.1% - 20%
  - 4 had decreases of more than 20%

- Neighbor Islands: 27 schools reported enrollment remaining the same or increasing. 13 reported enrollment decreasing.  
Of neighbor island schools with decreasing enrollments:
  - 6 had decreases less than 5%
  - 1 had a decreases of 5.1%-10%
  - 3 had decreases of 10.1% - 20%
  - 3 had decreases of 20%

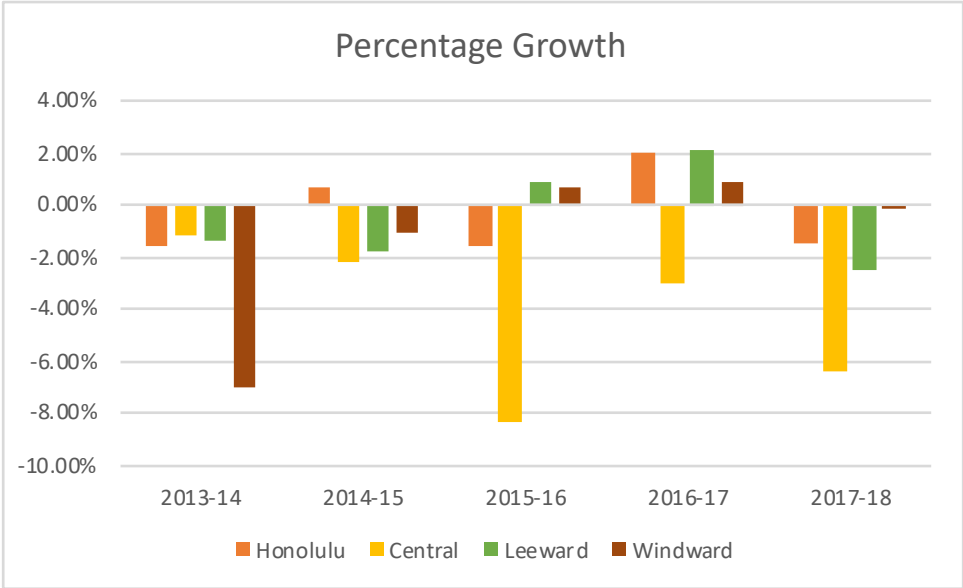
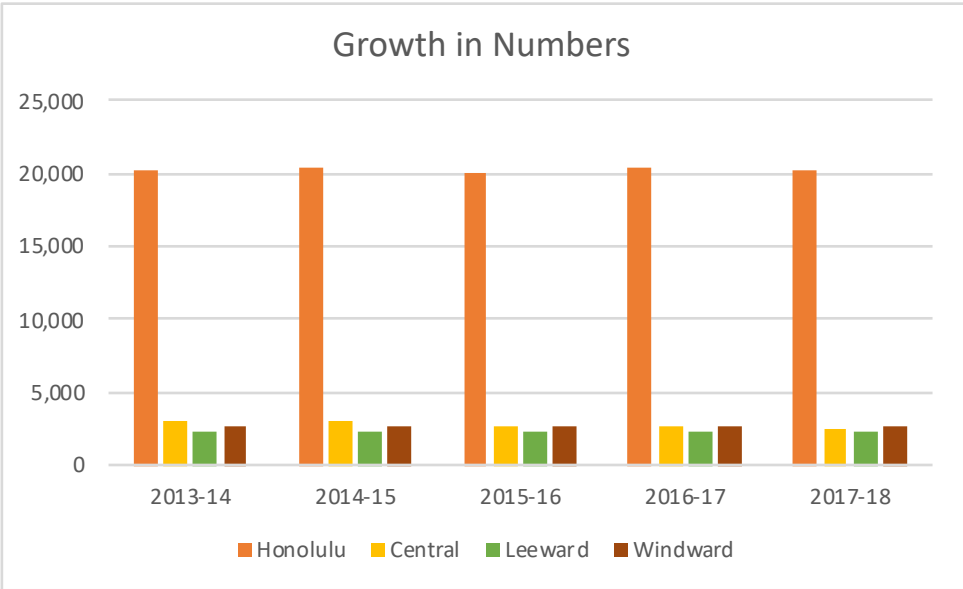
## Hawai'i Independent School Enrollment Trends



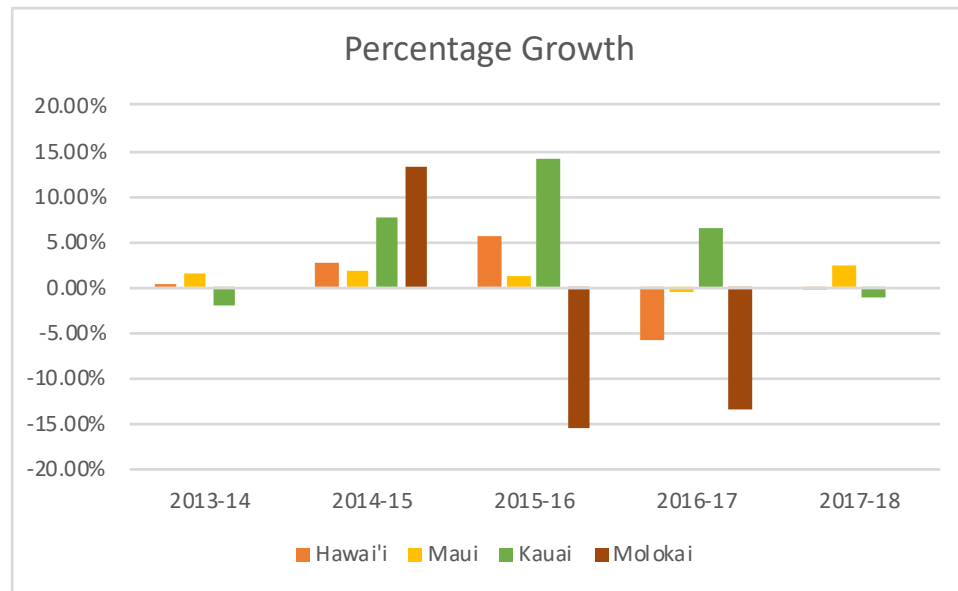
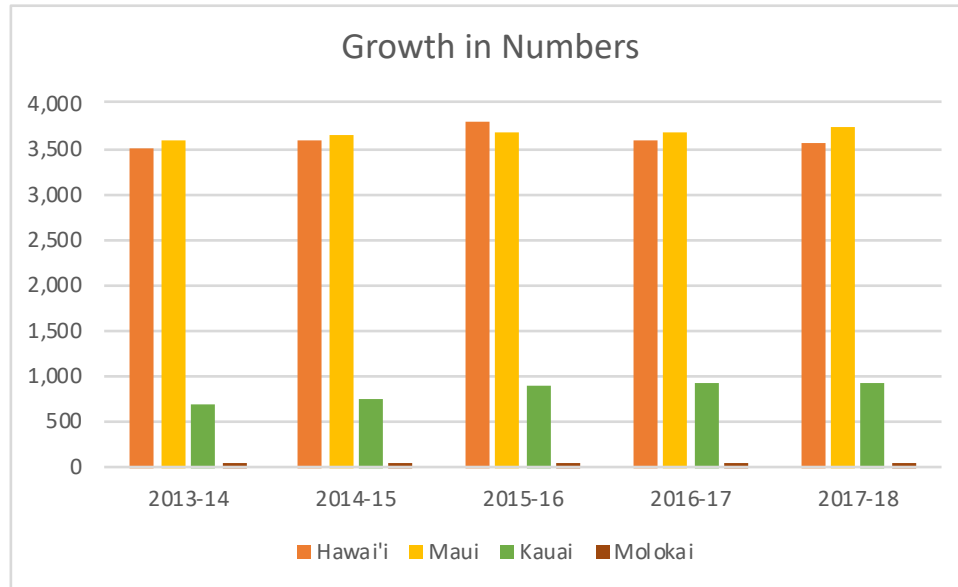
## Oahu and Neighbor Island Comparison of Enrollment Trends



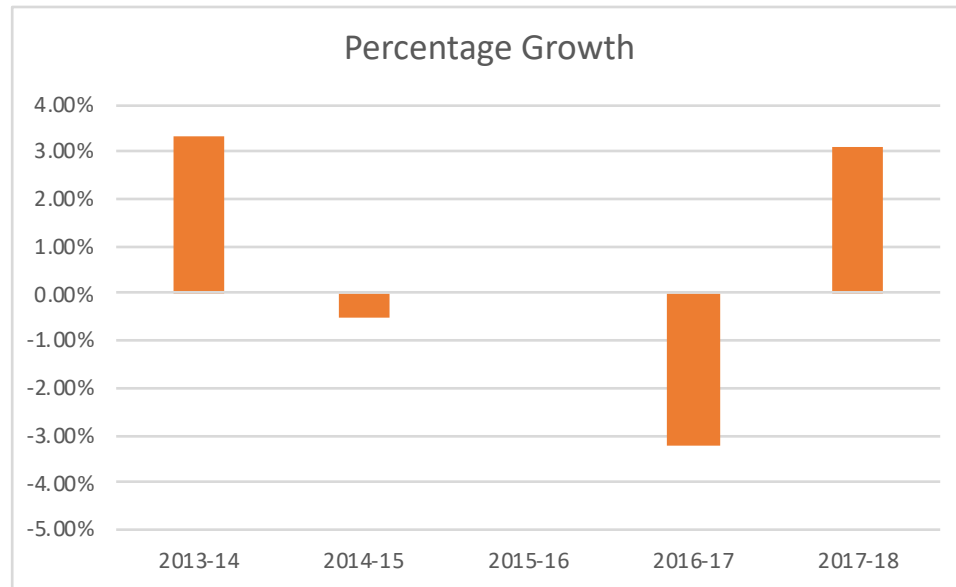
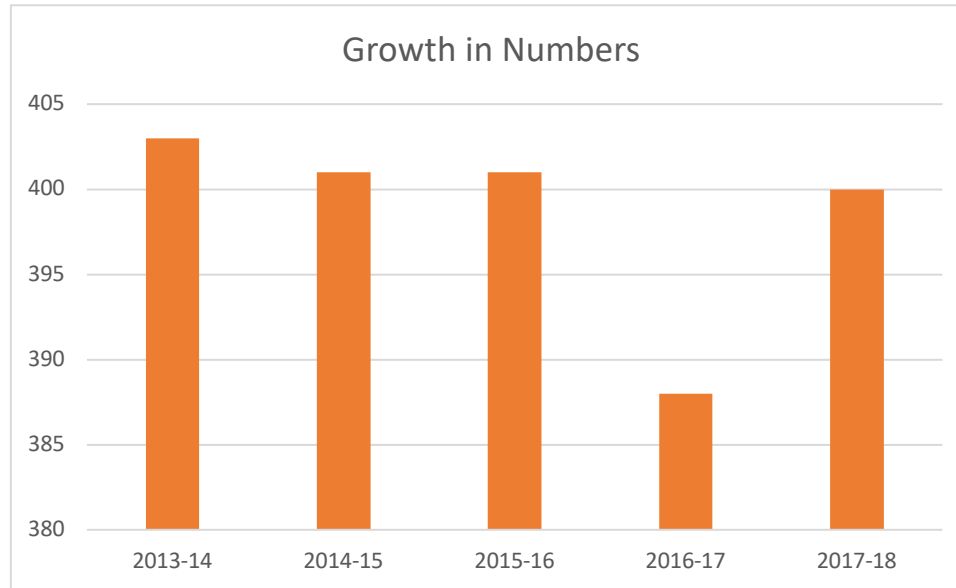
### Oahu Independent School Enrollment Trends by District



## Neighbor Island Independent School Enrollment Trends



## Special Purpose Independent School Enrollment Trends





## 2016-2017 – Number of Private Schools by Type of School

	State Total	Honolulu	Central	Leeward	Windward	Oahu Total	Hawai'i	Maui	Kauai	Molokai	Neighbor Island Total
<b>ELEMENTARY</b>											
PreK	6	2	2	0	0	4	0	2	0	0	2
PreK, K	8	4	1	1	0	6	2	0	0	0	2
PreK, K-1	0	0	0	0	0	0	0	0	0	0	0
PreK, K-2	0	0	0	0	0	0	0	0	0	0	0
PreK, K-3	0	0	0	0	0	0	0	0	0	0	0
PreK, K-4	0	0	0	0	0	0	0	0	0	0	0
PreK, K-5	2	1	1	0	0	2	0	0	0	0	0
PreK, K-6	4	2	0	2	0	4	0	0	0	0	0
K-5	1	0	0	0	0	0	1	0	0	0	1
K-6	1	1	0	0	0	1	0	0	0	0	0
<b>Total</b>	<b>22</b>	<b>10</b>	<b>4</b>	<b>3</b>	<b>0</b>	<b>17</b>	<b>3</b>	<b>2</b>	<b>0</b>	<b>0</b>	<b>5</b>
<b>ELEMENTARY - INTERMEDIATE</b>											
PreK, K-7	0	0	0	0	0	0	0	0	0	0	0
PreK, K-8	27	6	6	1	4	17	3	5	2	0	10
K-7	0	0	0	0	0	0	0	0	0	0	0
1-7	1	0	0	0	0	0	0	0	1	0	1
2-7	0	0	0	0	0	0	0	0	0	0	0
K-8	9	1	0	3	3	7	1	1	0	0	2
1-8	2	1	0	0	0	1	1	0	0	0	1
3-8	1	0	0	0	0	0	0	1	0	0	1
<b>Total</b>	<b>40</b>	<b>8</b>	<b>6</b>	<b>4</b>	<b>7</b>	<b>25</b>	<b>5</b>	<b>7</b>	<b>3</b>	<b>0</b>	<b>15</b>
<b>ELEMENTARY - HIGH</b>											
PreK, K-9	0	0	0	0	0	0	0	0	0	0	0
PreK, K-11	0	0	0	0	0	0	0	0	0	0	0
PreK, K-12	20	6	1	1	2	10	3	5	2	0	10
K-11	0	0	0	0	0	0	0	0	0	0	0
K-12	20	8	2	3	2	15	3	1	1	0	5
1-12	0	0	0	0	0	0	0	0	0	0	0
4-12	0	0	0	0	0	0	0	0	0	0	0
5-12	1	0	0	0	0	0	0	0	0	1	1
<b>Total</b>	<b>41</b>	<b>14</b>	<b>3</b>	<b>4</b>	<b>4</b>	<b>25</b>	<b>6</b>	<b>6</b>	<b>3</b>	<b>1</b>	<b>16</b>
<b>INTERMEDIATE</b>											
7-8	0	0	0	0	0	0	0	0	0	0	0
<b>Total</b>	<b>0</b>	<b>0</b>	<b>0</b>	<b>0</b>	<b>0</b>	<b>0</b>	<b>0</b>	<b>0</b>	<b>0</b>	<b>0</b>	<b>0</b>
<b>INTERMEDIATE - HIGH</b>											
6-11	0	0	0	0	0	0	0	0	0	0	0
6-12	4	2	0	0	0	2	0	2	0	0	2
7-10	1	0	0	0	0	0	0	0	1	0	1
8-12	0	0	0	0	0	0	0	0	0	0	0
<b>Total</b>	<b>5</b>	<b>2</b>	<b>0</b>	<b>0</b>	<b>0</b>	<b>2</b>	<b>0</b>	<b>2</b>	<b>1</b>	<b>0</b>	<b>3</b>
<b>HIGH</b>											
9-12	3	2	0	0	0	2	0	0	0	1	1
<b>Total</b>	<b>3</b>	<b>2</b>	<b>0</b>	<b>0</b>	<b>0</b>	<b>2</b>	<b>0</b>	<b>0</b>	<b>0</b>	<b>1</b>	<b>1</b>
<b>Total Traditional Schools</b>	<b>79</b>	<b>23</b>	<b>8</b>	<b>8</b>	<b>8</b>	<b>47</b>	<b>13</b>	<b>12</b>	<b>5</b>	<b>2</b>	<b>32</b>
Special Purpose Schools	3	2	0	0	0	2	0	1	0	0	1
Hawai'i Catholic Schools	31	13	5	3	3	24	1	4	2	0	7
<b>GRAND TOTAL</b>	<b>113</b>	<b>38</b>	<b>13</b>	<b>11</b>	<b>11</b>	<b>73</b>	<b>14</b>	<b>17</b>	<b>7</b>	<b>2</b>	<b>40</b>

**2017-2018 – Private School Enrollment**

<b>Enrollment 2017-2018 (Honolulu District)</b>																
<b>School</b>	<b>EC</b>	<b>PK</b>	<b>K</b>	<b>1</b>	<b>2</b>	<b>3</b>	<b>4</b>	<b>5</b>	<b>6</b>	<b>7</b>	<b>8</b>	<b>9</b>	<b>10</b>	<b>11</b>	<b>12</b>	<b>Total</b>
Central Union Preschool & Kindergarten		181														181
Christian Academy		50	20	14	17	18	19	17	19	9	13	8	9	14	6	233
Damien Memorial School									41	62	63	155	93	93	143	650
Hanahau'oli School		27	26	26	28	25	27	26	25							210
Hawaii Baptist Academy			43	36	40	39	46	64	64	107	102	139	110	112	113	1015
Hawaiian Mission Academy Ka Lama Iki			13	10	12	6	12	11	10	15	12					101
Hawaiian Mission Academy - 9-12 Campus												24	23	27	21	95
Holy Nativity School		30	24	24	16	23	15	17	16	7	2					174
Hongwanji Mission School		80	48	40	32	32	30	33	24	18	25					362
Honolulu Waldorf School		37	36	19	11	20	17	15	13	12	14	15	12	11	20	252
Iolani School			72	68	69	68	72	64	134	185	218	237	249	238	229	1903
Kaimuki Christian School		42	37	17	24	24	24	27	18	14	24	14	6	13	4	288
Kamehameha Schools			80	80	80	80	144	144	144	320	320	450	450	450	450	3192
Kawaiaha'o Church School	32	48	11	4	5	1	2	1								104
L. Robert Allen Montessori/Chaminade*		28	8													36
La Pietra - Hawai'i School for Girls									18	20	25	26	32	30	16	167
Mary, Star of the Sea*				22	31	17	26	13	17	23	19					168
Mary, Star of the Sea Early Learning Center	55	112	30													197
Maryknoll School			56	62	76	74	77	73	73	80	79	137	99	122	136	1144
Mid-Pacific Institute		32	36	43	45	44	45	45	125	160	177	227	224	178	188	1569
Montessori Community School		99	24	17	19	6	9	10	8							192
Pacific Buddhist Academy												13	15	11	17	56
Playmate Kindergarten, Day Care Center & Grade School, Ltd.		15														15
Punahou School			150	152	150	151	201	200	293	358	372	433	424	419	439	3742
Sacred Hearts Academy		38	38	38	34	38	43	50	52	70	70	100	106	117	103	897
Saint Francis School	33	16	26	11	15	16	19	16	20	27	46	57	50	73	66	491
Saint Louis School			22	22	21	13	21	33	75	87	106	140	132	108	105	885
St. Andrew's Schools		139	32	27	18	17	16	13	17	20	27	29	30	34	26	445
St. Anthony School - Kalihi*			8	12	8	9	9	6	5	6	8					71
St. Clement's School		112	22													134
St. John the Baptist School		21	22	12	9	6	12	8	10	10	18					128
St. Patrick School		63	51	23	16	22	29	25	36	32	24					321
St. Philomena Early Learning Center	35	150	15													200
St. Theresa School		20	22	25	20	25	18	20	26	32	18					226
Soto Academy			15	12	8	12	12	11	5							75
Waolani Judd Nazarene School		84	44	21	19	18	18	14	14	5	6					243
<b>Total</b>	<b>155</b>	<b>1424</b>	<b>1031</b>	<b>837</b>	<b>823</b>	<b>804</b>	<b>963</b>	<b>956</b>	<b>1302</b>	<b>1679</b>	<b>1788</b>	<b>2204</b>	<b>2064</b>	<b>2050</b>	<b>2082</b>	<b>20162</b>

<b>Enrollment 2017-2018 (Central District)</b>																
School	EC	PK	K	1	2	3	4	5	6	7	8	9	10	11	12	Total
Calvary Chapel Christian School			12	18	14	8	19	16	15	11	16	4	15	7	13	168
Central Christian School		32	10													42
Hanalani Schools		70	50	50	40	36	36	43	44	57	47	54	65	68	64	724
Ho'ala School			12	6	6	4	7	6	6	6	5	2	5	3	3	71
Holy Family Catholic Academy		57	56	46	33	39	43	43	42	44	41					444
Navy Hale Keiki School		68	50	35	24	19	19	14								229
Our Savior Lutheran School		29	12	12	14	11	12	12	11	9	6					128
Pearl Harbor Christian Academy		27	17	17	20	19	13	15	20	18	16					182
Rosary Preschool*		50														50
Saint Elizabeth School		5	21	16	15	19	20	12	13	13	12					146
St. John's Catholic Preschool*		52														52
St. Michael School		24	10	11	6	5	0	5	5	3	14					83
Trinity Lutheran School		49	15	7	8	14	14	10	7	10	12					146
<b>Total</b>	<b>0</b>	<b>463</b>	<b>265</b>	<b>218</b>	<b>180</b>	<b>174</b>	<b>183</b>	<b>176</b>	<b>163</b>	<b>171</b>	<b>169</b>	<b>60</b>	<b>85</b>	<b>78</b>	<b>80</b>	<b>2465</b>

<b>Enrollment 2017-2018 (Leeward District)</b>																
School	EC	PK	K	1	2	3	4	5	6	7	8	9	10	11	12	Total
Adventist Malama Elementary School			9	6	7	10	6	10	5	3	5					61
American Renaissance Academy			13	10	6	6	10	7	8	4	2	8	6	4	4	88
Friendship Christian Schools		62	40	33	22	22	18	24	17	21	13	9	1	8	8	298
Island Pacific Academy			48	32	41	40	40	40	50	40	50	58	41	30	24	534
Lanakila Baptist Schools			18	12	8	11	15	8	8	18	13					111
Maili Bible School			8	8	10	5	6	5	7	5	4	2		2	4	66
New Hope Christian School	12	105	16	16	11	12	5	5	1							183
Our Lady of Good Counsel School		24	16	16	24	15	12	21	13	11	16					168
Our Lady of Perpetual Help School			26	23	15	18	24	11	14	18	16					165
St. Joseph School		47	35	24	19	20	33	14	11	21	18	24	13	14	12	305
The Children's House		155	88	22	18	11	7	12	7							320
<b>Total</b>	<b>12</b>	<b>238</b>	<b>229</b>	<b>180</b>	<b>163</b>	<b>159</b>	<b>169</b>	<b>145</b>	<b>134</b>	<b>141</b>	<b>137</b>	<b>101</b>	<b>61</b>	<b>58</b>	<b>52</b>	<b>2299</b>

<b>Enrollment 2017-2018 (Windward District)</b>																
<b>School</b>	<b>EC</b>	<b>PK</b>	<b>K</b>	<b>1</b>	<b>2</b>	<b>3</b>	<b>4</b>	<b>5</b>	<b>6</b>	<b>7</b>	<b>8</b>	<b>9</b>	<b>10</b>	<b>11</b>	<b>12</b>	<b>Total</b>
Asia Pacific International School, Hawaii Campus			6	6	6	6	6	15	15	15	15	15	15	15	15	150
Hawaiian Mission Academy - Windward Campus			10	12	11	7	8	5	7	18	7					85
Huakailani School for Girls			3	3	4	3	3	4	4	3	3					30
Koolau Baptist Academy*			21	18	18	18	18	10	18	21	21	15	12	15	11	216
Le Jardin Academy		80	41	52	41	55	62	60	58	60	65	66	50	60	65	815
Saint Mark Lutheran School			19	18	22	20	25	25	23	20	18					190
St. Ann's Model School		96	22	16	9	10	9	18	9	16	9					214
St. Anthony School -Kailua		62	34	26	30	24	26	18	29	16	15					280
St. John Vianney School		31	19	20	16	14	11	15	11	17	16					170
Trinity Christian School		53	29	29	30	30	29	25	18	15	36	13	10	12	10	339
Windward Nazarene Academy		77	17	17	14	7	6	12	4	4	4					162
<b>Total</b>	<b>0</b>	<b>399</b>	<b>221</b>	<b>217</b>	<b>201</b>	<b>194</b>	<b>203</b>	<b>207</b>	<b>196</b>	<b>205</b>	<b>209</b>	<b>109</b>	<b>87</b>	<b>102</b>	<b>101</b>	<b>2651</b>

<b>Enrollment 2017-2018 (Hawai'i District)</b>																
<b>School</b>	<b>EC</b>	<b>PK</b>	<b>K</b>	<b>1</b>	<b>2</b>	<b>3</b>	<b>4</b>	<b>5</b>	<b>6</b>	<b>7</b>	<b>8</b>	<b>9</b>	<b>10</b>	<b>11</b>	<b>12</b>	<b>Total</b>
Christian Liberty Academy		44	23	18	18	18	17	17	20	16	16	13	10	15	12	257
E Maka'ala School*		56	17													73
Haili Christian School		50	20	18	16	16	14	12	12	11	10					179
Hawai'i Montessori Schools - Kona Campus	24	53	3													80
Hawaii Preparatory Academy			16	20	20	20	22	22	30	36	46	86	100	102	106	626
Kamehameha Schools Hawai'i			40	40	40	40	48	48	108	108	108	144	144	144	144	1156
Kohala Adventist School				1		2	3	2	1	4	4					17
Kona Adventist Christian School			2	1	4		1	3	4	2	2					19
Makua Lani Christian Academy		16	24	19	17	17	16	19	17	14	20	22	22	31	21	275
Malamalama Waldorf School		37	18	14	11	8	10	13	9	9	4					133
Mauna Loa School		22	3	9	4	6	6	4	7	5	1					67
Parker School			16	18	18	18	18	18	32	34	34	36	36	30	24	332
St. Joseph School		47	35	24	19	20	33	14	11	21	18	24	13	14	12	305
Waimea Country School			8	8	8	8	8	8								48
<b>Total</b>	<b>24</b>	<b>325</b>	<b>225</b>	<b>190</b>	<b>175</b>	<b>173</b>	<b>196</b>	<b>180</b>	<b>251</b>	<b>260</b>	<b>263</b>	<b>325</b>	<b>325</b>	<b>336</b>	<b>319</b>	<b>3567</b>

<b>Enrollment 2017-2018 (Maui District)</b>																
School	EC	PK	K	1	2	3	4	5	6	7	8	9	10	11	12	Total
Carden Academy of Maui		12	16	12	16	16	18	18	18	18	11					155
Christ the King Preschool*		59														59
Doris Todd Christian Academy		29	20	13	12	17	15	17	20	14	10	2	6	3	4	182
Emmanuel Lutheran School			22	19	20	11	15	12	16	14	5					134
Haleakala Waldorf School	20	28	40	21	24	24	28	20	22	21	24	14	11	11	17	325
Ka'ahumanu Hou Christian School		60	8	5	4		4	2	4	6	3	3	4	6	3	112
Kamehameha Schools Maui			40	40	40	48	48	48	108	108	108	120	120	120	120	1068
Maui Adventist School						2	3	1	2	3	1					12
Maui Preparatory Academy		39	9	14	11	11	15	16	15	11	18	17	22	20	12	230
Montessori Hale O Keiki		24	6	4	6	6	6	3	3	2	6					66
Montessori School of Maui	12	87	30	28	25	24	23	23	12	5	6					275
ROOTS School of Maui		18	10	10	7	5	3	4	8	4	1					70
Sacred Hearts School		38	20	25	21	15	23	17	24	19	14					216
Saint Joseph Early Learning Center		42														42
Seabury Hall									47	48	45	82	81	74	77	454
St. Anthony School / St. Anthony Preschool*		48	20	20	20	20	20	20	35	32	22	27	16	12	25	337
<b>Total</b>	<b>32</b>	<b>484</b>	<b>241</b>	<b>211</b>	<b>206</b>	<b>199</b>	<b>221</b>	<b>201</b>	<b>334</b>	<b>305</b>	<b>274</b>	<b>265</b>	<b>260</b>	<b>246</b>	<b>258</b>	<b>3737</b>

<b>Enrollment 2017-2018 (Kauai District)</b>																
School	EC	PK	K	1	2	3	4	5	6	7	8	9	10	11	12	Total
Island School		44	21	21	21	21	25	25	30	30	35	34	35	25	35	402
Kahili Adventist School				1	3	2	2	3	2	3						16
Kauai Christian Academy*		40	8	7	3	3	4	4	1	3	4	3	1	3	3	87
Olelo Christian Academy*			2	3	1	1	4		2	2	1	1			2	19
Pu'ukumu School*										40	30	15	15			100
St. Catherine School		51	18	10	8	18	11	16	14	10	17					173
St. Theresa School		37	20	18	15	6	8	8	8	6	10					136
<b>Total</b>	<b>0</b>	<b>172</b>	<b>69</b>	<b>60</b>	<b>51</b>	<b>51</b>	<b>54</b>	<b>56</b>	<b>57</b>	<b>94</b>	<b>97</b>	<b>53</b>	<b>51</b>	<b>28</b>	<b>40</b>	<b>933</b>

<b>Enrollment 2017-2018 (Molokai District)</b>																
School	EC	PK	K	1	2	3	4	5	6	7	8	9	10	11	12	Total
Aka'ula School								4	3	5	6	5	6	0	1	30
Ho'omana Hou School												5	4	3	3	15
<b>Total</b>	<b>0</b>	<b>0</b>	<b>0</b>	<b>0</b>	<b>0</b>	<b>0</b>	<b>0</b>	<b>4</b>	<b>3</b>	<b>5</b>	<b>6</b>	<b>10</b>	<b>10</b>	<b>3</b>	<b>4</b>	<b>45</b>

Enrollment 2017-2018 (Special Purpose Schools)																	
School	EC	PK	K	1	2	3	4	5	6	7	8	9	10	11	12	Total	
Assets School			6	12	5	10	29	27	37	35	37	45	32	37	37	349	
Variety School of Hawaii																45	
Horizons Academy of Maui, Inc.									2			2	1		1	6	
<b>Total</b>	<b>0</b>	<b>0</b>	<b>6</b>	<b>12</b>	<b>5</b>	<b>10</b>	<b>29</b>	<b>27</b>	<b>39</b>	<b>35</b>	<b>37</b>	<b>47</b>	<b>33</b>	<b>37</b>	<b>38</b>	<b>400</b>	

Enrollment 2017-2018 (Hawai'i Catholic Schools)																	
School	EC	PK	K	1	2	3	4	5	6	7	8	9	10	11	12	Total	
<b>OAHU</b>																	
Damien Memorial School									41	62	63	155	93	93	143	650	
Holy Family Catholic Academy		57	56	46	33	39	43	43	42	44	41					444	
L. Robert Allen Montessori/Chaminade*		28	8													36	
Maryknoll School			56	62	76	74	77	73	73	80	79	137	99	122	136	1144	
Mary, Star of the Sea*				22	31	17	26	13	17	23	19					168	
Mary, Star of the Sea Early Learning Center	55	112	30													197	
Our Lady of Good Counsel School		24	16	16	24	15	12	21	13	11	16					168	
Our Lady of Perpetual Help School			26	23	15	18	24	11	14	18	16					165	
Rosary Preschool*		50														50	
Sacred Hearts Academy		38	38	38	34	38	43	50	52	70	70	100	106	117	103	897	
St. Ann's Model School		96	22	16	9	10	9	18	9	16	9					214	
St. Anthony School - Kalihi*			8	12	8	9	9	6	5	6	8					71	
St. Anthony School -Kailua		62	34	26	30	24	26	18	29	16	15					280	
Saint Elizabeth School		5	21	16	15	19	20	12	13	13	12					146	
Saint Francis School	33	16	26	11	15	16	19	16	20	27	46	57	50	73	66	491	
St. John the Baptist School		21	22	12	9	6	12	8	10	10	18					128	
St. John's Catholic Preschool*		52														52	
St. John Vianney School		31	19	20	16	14	11	15	11	17	16					170	
St. Joseph School		47	35	24	19	20	33	14	11	21	18	24	13	14	12	305	
Saint Louis School			22	22	21	13	21	33	75	87	106	140	132	108	105	885	
St. Michael School		24	10	11	6	5	0	5	5	3	14					83	
St. Patrick School		63	51	23	16	22	29	25	36	32	24					321	
St. Philomena Early Learning Center	35	150	15													200	
St. Theresa School		20	22	25	20	25	18	20	26	32	18					226	
<b>HAWAII</b>																	
St. Joseph School		47	35	24	19	20	33	14	11	21	18	24	13	14	12	305	
<b>KAUAI</b>																	
St. Catherine School		51	18	10	8	18	11	16	14	10	17					173	
St. Theresa School		37	20	18	15	6	8	8	8	6	10					136	
<b>MAUI</b>																	
Christ the King Preschool*		59														59	
Sacred Hearts School		38	20	25	21	15	23	17	24	19	14					216	
St. Anthony School / St. Anthony Preschool*		48	20	20	20	20	20	20	35	32	22	27	16	12	25	337	
Christ the King Preschool*		59														59	
<b>Total</b>	<b>123</b>	<b>1235</b>	<b>650</b>	<b>522</b>	<b>480</b>	<b>463</b>	<b>527</b>	<b>476</b>	<b>594</b>	<b>676</b>	<b>689</b>	<b>664</b>	<b>522</b>	<b>553</b>	<b>602</b>	<b>8776</b>	

\* The numbers reported are from 16-17 school year. The schools were open in the 2017-2018 school and new enrollment #'s were not received.

